

The Lilac Hinge

Inland Empire Philatelic Society, PO Box 3731, Spokane, WA 99220
<http://ieps-stamps.com/> APS Affiliate 0343-030681

Meetings: 2nd & 4th Tuesdays (except July & December),
Spokane Valley Eagles, E. 16801 Sprague



January, 2018

Editor: Larry Mann, Larrymann02@aol.com, 509-290-5138

Volume XLVII, No.1,

Tuesday, January 23

- **Program:** Myron Molnau on "How to Turn an Accumulation into a Collection Using Belgian Congo Stamps"
- **Live and silent auctions**
- **Goodies:** Provided by Ken and Loretta Rehfeld

Tuesday February 13

- **6:30 Board meeting**
- **7:00 Stamp mixture meeting**

Purchase stamps from worldwide collections that the club purchased in the past year. Many of the stamps are in Scott International albums and there are also many covers. Good deals abound! Also look for Dale Cunningham who will bring material too.

Pay Your 2018 Dues

Please look at the date above your name on the *Lilac Hinge* mailing label. If it says 2017, please pay your dues.

Welcome to New Member Richard Sola!

Richard is from Spokane, and collects Spanish Philippines, 19th-century Samoa, and the Industrial Workers of the World (IWW).



Closed Albums: Gordon Savatsky & Betty Ann Hunter

28th annual John Arn Philatelic Symposium, April 7, 2018 in Moses Lake

- **Speakers:** Michael Bloom and David Snow from Portland, Jerry Johnson from the Tri-Cities, and a fourth speaker who has not yet been announced
- **Clothesline exhibits, silent and live auctions, and an evening dinner**

Watch for more details in the February *Lilac Hinge*.

Club Auction Lots for the January 23 Meeting:

Lot #	Description	Catalogue value	Minimum bid
7061	New Zealand (Scott 402), mint hinged	\$20.00	\$5.00
7062	Dahomey (Scott 160-71), used set	\$5.20	\$2.00
7063	Malaysian States: Negri (Scott 76-82); Donang (67-73), Selangar (121-29)	\$15.25	\$3.50
7064	Laos souvenir sheet (Scott 84a), mint NH	\$5.00	\$1.50
7065	Rhodesia (Scott 200-02), mint hinged	\$6.75	\$1.50
7066	Samoa (Scott 223-32), mint hinged	\$11.15	\$2.00
7067	US face postage, \$17.36		\$8.00
7068	China PRC , assorted mint	\$13.05	\$3.00
7069	China Temple of Heaven issue (Scott 131-33), mint NH	\$28.50	\$6.00
7070	Maldiv Islands (Scott 274-77), mint	\$14.50	\$3.00
7071	Worldwide assorted covers	\$40.00	\$4.00
7072	China (Scott 1290-95), mint	\$40.75	\$9.00
7073	Mexico (Scott 318-20), mint	\$74.50	\$18.00
7074	Russia (Scott 1341-42, 1650-54)	\$39.40	\$8.00
7075	China (Scott 16-22), used	\$955.00	\$250.00
7076	China PRC cover and single stamps (Scott 1663a, 1664-65, 1740-44)	\$40.20	\$10.00
7077	China cover with Scott 2139-42	\$11.35	\$5.00
7078	Netherlands New Guinea (Scott B19-22)	\$3.00	\$1.00
7079	Poland Tropical Fish (Scott 1492-1500)	\$5.00	\$1.50
7080	China PRC Peasant Uprising	\$30.00	\$6.00

2017 Philatelist of the Year, Larry Mann

Larry Mann, the *Lilac Hinge* editor, won the IEPS Lee Dark Philatelist of the Year award for 2017. Larry received the award from Ken Rehfeld at the Christmas banquet and party on December 12, 2017.

The award, which includes the names of past winners starting in 1989, is his to keep for the coming year, and is then passed on to the next year's winner. Chuck Jones was the 2016 winner.

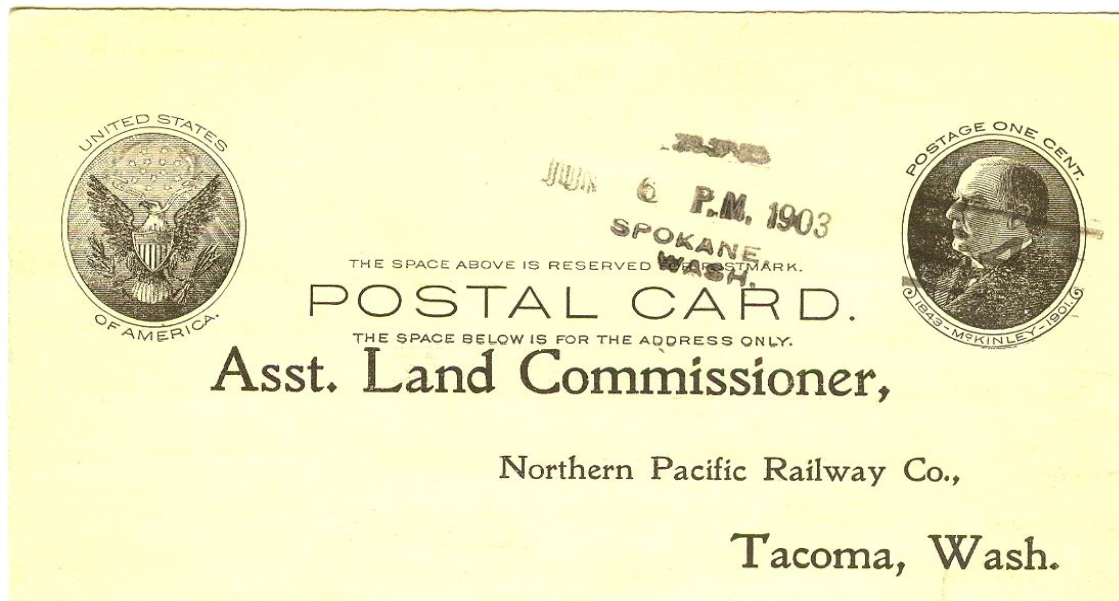


2017 IEPS Christmas Banquet & Party

We had a big turnout for our annual Christmas banquet and party on December 12. The party included a "steal a gift" exchange that featured wine, candy, and other items, with even a few philatelic gifts.



1903 Spokane Rural Free Delivery (RFD)



— By Larry Mann



The above postal card has a June 6, 1903 Spokane Rural Free Delivery (RFD) cancel. It is addressed to the Assistant Land Commissioner of the Northern Pacific Railway and deals with a deed for land sold to a settler. The railway received grants of land from the US government and sold them to settlers to fund construction.

RFD routes began in the United States in the fall of 1896, and provided pickup and delivery of mail to people in rural areas not served by nearby post offices. Customers could even purchase postage stamps from carriers. Beginning in 1900, the US Post Office Department required carriers to cancel mail in route, and supplied them with pocket-sized rubber hand cancels such as the above example used by the Spokane post office. Similar cancels were used by carriers on rural routes across the United States.

By 1908, the Spokane post office had 11 RFD routes that began from either the main post office or one of the branches. Route 4 went from the city limits, west past Greenwood Cemetery and the US Army's Fort Wright, and across White Bluff Prairie to the Deep Creek area.

The Post Office Department stopped supplying cancels for new RFD routes beginning in July 1903. In July 1905, it ended the requirement that mail be cancelled, if it was destined for a local address. For mail to other areas, the department recommended that carriers cancel mail with an indelible pencil, listing the RFD route number, city, state, and date. Carriers were also free to purchase hand stamps from commercial companies, and many did.

Although RFD routes still exist, most carriers stopped canceling mail by 1920, and cancels from later dates are unusual.

Vintage Postcards & Stamps	
 	
5202 N Market Spokane, WA 99217	<i>Buying and Selling Antique Postcards, Stamps, Paper Ephemera and Supplies for the Collector</i>
509-487-5677	
Hours of Operation: Tues-Fri 10-5, Sat 10-4 Closed Sun & Mon	<i>Mike, Kathy and Jon McLean</i>