

The Lilac Hinge

Inland Empire Philatelic Society, PO Box 3731, Spokane, WA 99220
<http://ieps-stamps.com/> APS Affiliate 0343-030681

Meetings: 2nd & 4th Tuesdays (except July & December),
Spokane Valley Eagles, E. 16801 Sprague



Editor: Larry Mann, Larrymann02@aol.com, 509-290-5138

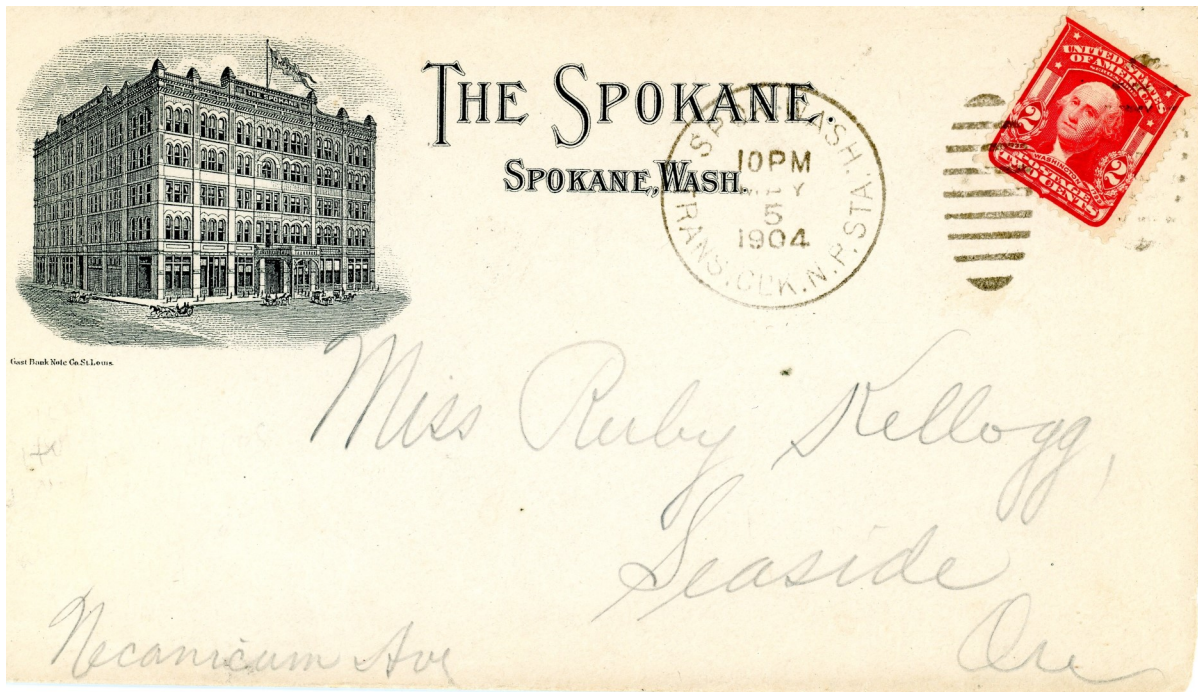
Volume XLIX, No. 11 **November, 2020**

Club Meetings Update

With no meetings since February, I'd like to update you with news about the club and when we might meet again. The Eagles still don't allow meetings, and Governor Inslee announced on November 15 that no indoor gatherings will be allowed for the foreseeable future. Because of this the November and December meetings are cancelled, and we probably won't have any in-person meetings until things return to normal, sometime next year. Here is an update on club news:

- **November and December meetings:** Cancelled
- **Club elections:** Normal November elections have been postponed. Club officers and Board members will continue to serve until we can have an election sometime next year.
- **Member dues:** No dues will be collected and **all members are considered paid through the end of 2021.**
- **Stamp album pages:** The club just bought new stamp album disks. This is a great resource that can be used to print album pages for all worldwide countries. The pages are very complete and you can print pages for any countries that interest you. Most countries have pages updated through 2019, with some countries including a few 2020 issues. Both Ken and Jay have the disks. Contact either one to borrow the disks.
- **The Lilac Hinge:** As usual, the November issue will be the last for this year. The next issue will come out in January, 2021. I plan to continue to write articles such as the one in this month's issue and the one on a John W. Graham cover in the October issue. I could use your help, though, and would welcome any articles that you might want to submit. Suggestions include writing about a favorite stamp or cover, how you got into stamp collecting, what you collect, other hobbies or interests, etc. Articles should be short—anywhere from a few paragraphs to a page or two. Include pictures if you have them. And don't worry about editing, as I'll take care of that.
- **Zoom/Skype online meeting for January?:** Even though we can't have regular, in-person meetings for now, online meetings are possible. The technology is simple, and here are a few details in case you are unfamiliar with Zoom or Skype. A host sends out an emailed link. Click the link to open the meeting. Laptops, PCs, tablets, and smart phones all work fine. You can see attendees on your screen—and they can see you, if you have a camera on your screen. Attendees can talk to each other, and the host can share a program on screen. Some of us probably already use online meetings. I attend weekly and monthly meetings that way, and attended several philatelic presentations during SEAPEX in September. Is anyone interested in having an online meeting on **Tuesday, January 26, 2021**, the date of our normal fourth-Tuesday meeting? To get the ball rolling, I'll host the meeting and give the first program, a follow-up to the Spokane postal history program I gave at the October, 2017 meeting. That one focused on 1872-1891, and this one will show later covers. Please contact me (509-290-5138 or Larrymann02@aol.com) if you are interested in attending. We'll have the meeting only if enough people contact me and say they are interested and want to attend.

The Hotel Spokane



May 5, 1904 Spokane North Pacific Station Transfer Clerk cancel on cover to Seaside, Oregon

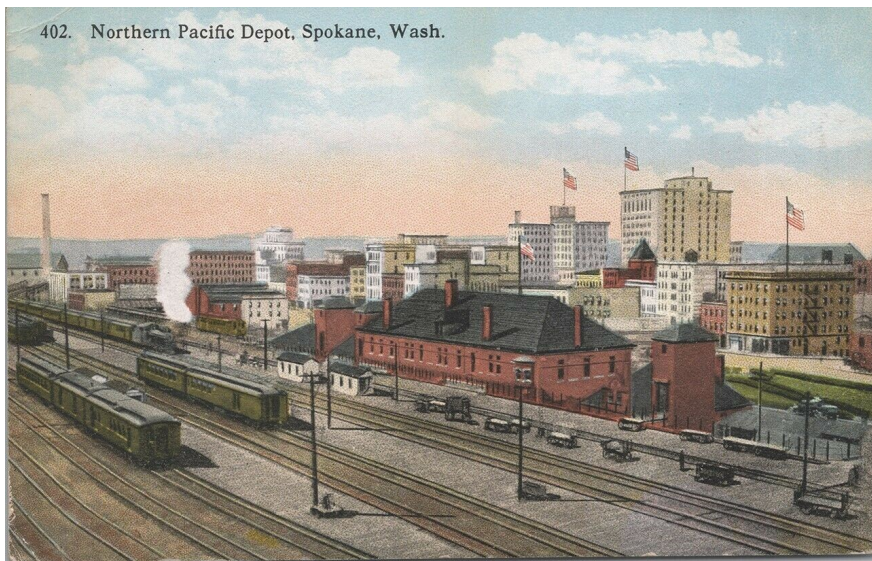
This 1904 cover was probably sent by a guest who was staying at the Hotel Spokane. The hotel, on the south-west corner of First and Stevens, was built in 1889. It was considered one of the better hotels in Spokane and was noted for the Silver Grill restaurant, shown below. According to Carolyn Hage Nunemaker in her book, *Downtown Spokane Images, 1930-1949*, the restaurant took its name from prime rib dinners that were “brought to the table and carved with much flair and style on a large and beautiful French silver traveling carver.” The restaurant was designed by architect Kirtland Cutter, who also designed the Davenport Hotel, Spokane Club, and many other Spokane buildings. Meat in the Silver Grill was cooked over a spit in the large fireplace, tended by steward Clarence Taylor, who started working at the restaurant at the age of 12, in 1902, staying on until at least 1958.



Silver Grill restaurant in the Hotel Spokane

The 1904 cover has a Northern Pacific Railroad station “transfer clerk” cancellation. Transfer clerks worked in railroad stations, collecting mail from station collection boxes or handed to them by train passengers. The Northern Pacific station was two blocks from the hotel, and would have been a convenient place to mail a letter for a passenger who arrived in Spokane on a Northern Pacific train and was a guest at the hotel.

Right: Early 1900s view of the Northern Pacific station. The station still exists and is used by Amtrak and as a bus station.

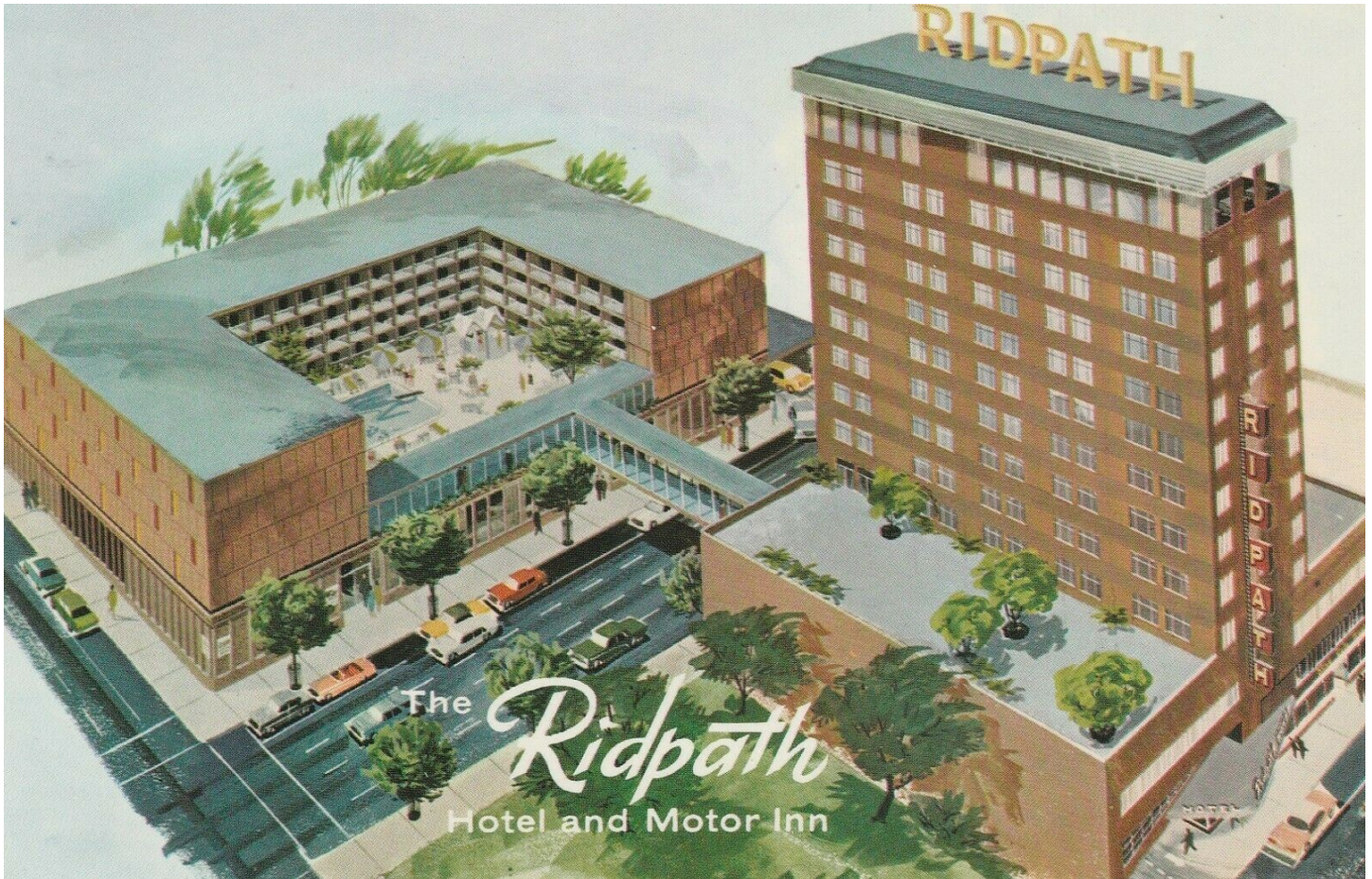


April 14, 1906 cover from the Hotel Spokane to Portland, Oregon

The above 1906 cover is on stationery from the Hotel Spokane and shows an advertising sign for the Silver Grill restaurant. The wording and carved logo is interesting: “Ye SIGN of Ye SILVER GRILL” with a swastika on the left and right side of the sign. The swastika was an ancient religious icon used by Hinduism and Buddhism as a symbol of spirituality and divinity. In the western world it was thought of as a symbol of good luck until appropriated by the Nazi Party in Germany in the 1930s. The swastikas were removed from the Silver Grill advertising sign by the 1940s. The cover has a flag cancel produced by the American Postal Machines Company. Flag cancels of this type were first used in Spokane in 1899. The above example has a number “1” to identify a second cancellation machine. Flag cancels from that machine were used in Spokane from 1905-10.

The Hotel Spokane closed at the end of 1961, and the hotel was torn down in 1962. It was replaced by the Ridpath Motor Inn. A skywalk was added to connect the motor inn with the main Ridpath Hotel across the street. The Ridpath Motor Inn was often used by the Inland Empire Philatelic Society as the location for stamp shows, starting in the 1960s.

In recent years the hotel was turned into low-income housing and the motor inn was torn down above the first floor.



The Ridpath Motor Inn (left) and Ridpath Hotel (right)

2020 Officers

President	J Palmer
Vice President	Anne Harris
Secretary	Bill Ailes
Treasurer	Ken Rehfeld
Director	Ken Owens
Director	Kevin Dixon
Director	Chuck Jones

Vintage Postcards & Stamps



5202 N Market
Spokane, WA 99217

509-487-5677

Hours of Operation:
Tues-Fri 10-5, Sat 10-4
Closed Sun & Mon

*Buying and Selling
Antique Postcards, Stamps,
Paper Ephemera and Supplies
for the Collector*

Mike, Kathy and Jon McLean